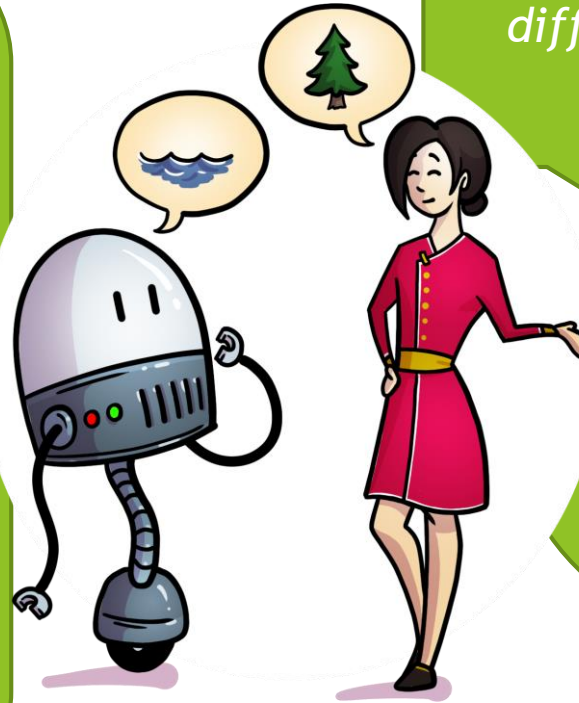


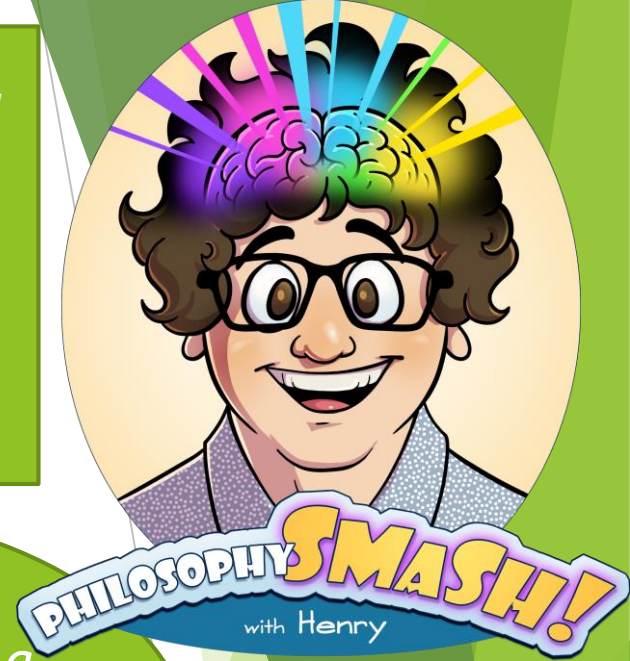
Can robots be cultured?

Iran says:
When you're designing a robot, you shouldn't think of culture as just someone's nationality, because not everyone from the same country behaves the same way (think how different British people are from each other). Also, you shouldn't think of culture just as nationality because that will exclude people who aren't from that country.



Robots are designed to help all different kinds of people in their day to day lives. This means they have to behave differently to people from different cultures.

Henry says:
What it means for a robot to be 'cultured' depends on what you want the robot to do.



What do you think?